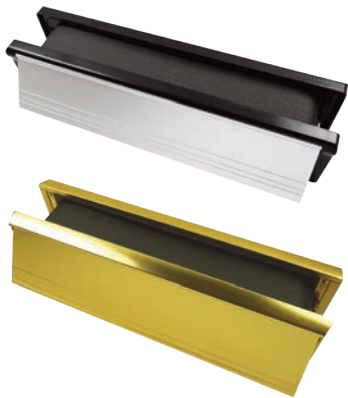




PROTECTING LIFE & PROPERTY



Intumescent Letterboxes

30 and 60 minute fire rated

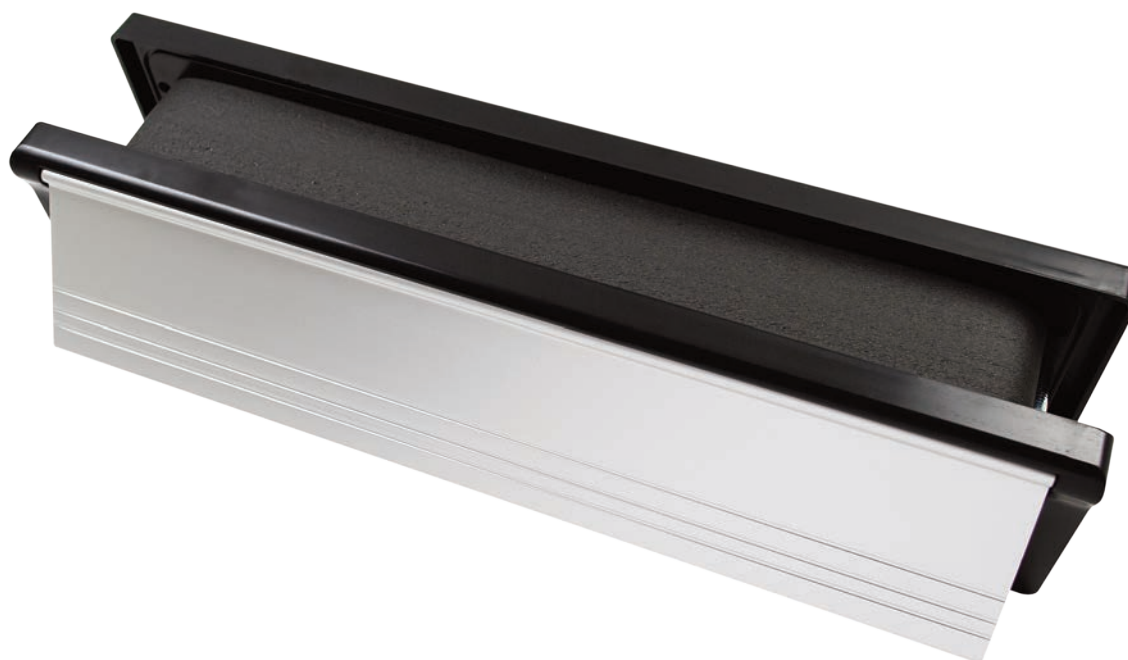


Made in the UK · Distributed Globally





Defender Range - 30 minute fire rated



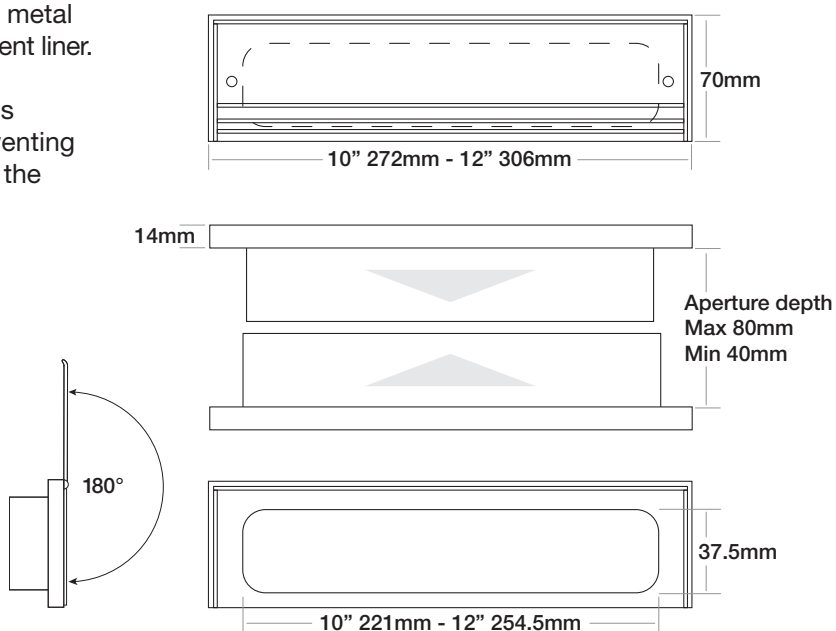
Description

A stylish ABS framed, telescopic letterbox, with metal flaps and fitted with a high performance intumescent liner.

In the event of fire the intumescent liner expands rapidly and seals of the letterbox opening, preventing the spread of fire and smoke whilst maintaining the integrity of the fire door assembly.

Features & Benefits

- Letterbox flaps open to 180°
- Smoke tested
- Acoustic tested achieving 32dB Rw
- Security tested to PAS 23/24
- Adjustable telescopic sleeve set to suit 40mm - 80mm door thickness
- Fitted with brush pile draught excluders
- Integral sound dampening bumpers
- Wide range of letter flap finishes
- Ergonomic curved edge design
- Fully sealed backplate



Key: symbols for product feature qualities



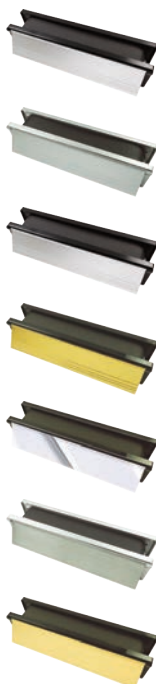


Defender Range - 30 minute fire rated



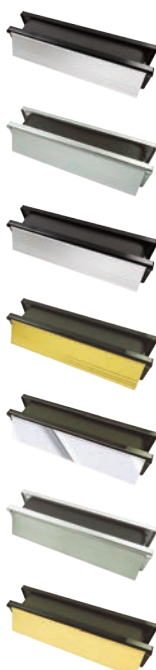
10" Intumescent Letterboxes

- FS303 Satin Anodised Aluminium (SAA) — Black frame
- FS317 Satin Anodised Aluminium (SAA) — Silver frame
- FS1505 Polished Silver (contract chrome effect) — Black frame
- FS1506 Polished Gold (contract brass effect) — Black frame
- FS301 Chrome - Black frame
- FS314 Stainless Steel - Silver frame
- FS300 Polished Brass - Black frame



12" Intumescent Letterboxes

- FS307 Satin Anodised Aluminium (SAA) — Black frame
- FS315 Satin Anodised Aluminium (SAA) — Silver frame
- FS1501 Polished Silver (contract chrome effect) — Black frame
- FS306 Polished Gold (contract brass effect) — Black frame
- FS305 Chrome - Black frame
- FS313 Stainless Steel - Silver frame
- FS304 - Polished Brass - Black frame



Testing

Fire Tested
Tested to BS 476 part 22: 1987 and BS EN 1634-1, 30 minute rated

Smoke Tested
Tested to BS 476 Part 31/1:1983

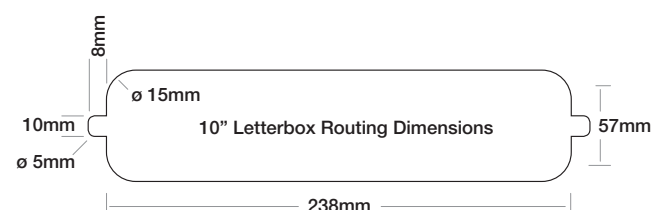
Acoustic Tested
Tested to BS EN ISO 140-3:1995 Achieving 32dB Rw

Security Tested
Tested to BS EN 13724 Clause 6.6.5
(Compliant within Scope of PAS 23/24)

Installation

1. Measure the external dimensions of the central telescopic section (including the fitted intumescent liner) to ascertain the aperture cut-out.
2. Carefully cut an aperture in the fire door leaf up to 1050mm from the bottom of the door. Please ensure that the aperture is a tight fit to allow the fixing of wood screws into the corner of the face plates.
3. The face plate fitted with the integral draught excluders should be located to the internal face of the door.
4. Locate the letter box into the cut aperture and secure using 4no. steel wood screws into each face plate.
5. To maintain the fire proof integrity of the fire door ensure any gaps between the letter box and the door aperture are sealed using our intumescent sealant.

Routing Dimensions





Defender Range - 30 minute fire rated

10" Defender Intumescent Letterboxes

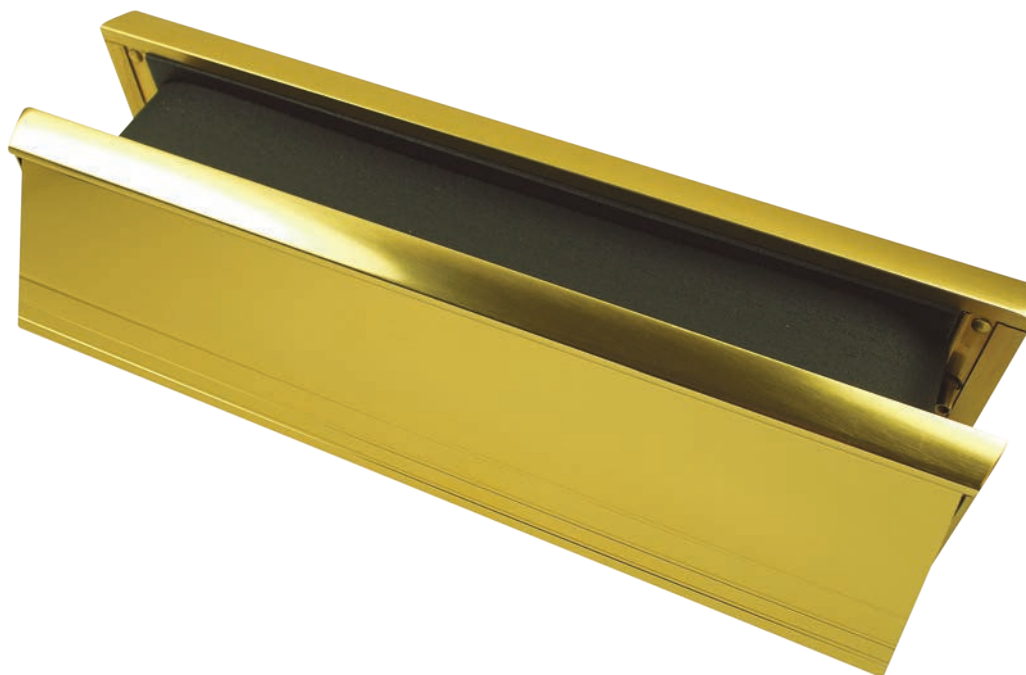
Code	Description	Finish	Pack Outers
FS303	Letterbox	SAA - Black frame	40
FS317	Letterbox	SAA - Silver frame	40
FS1505	Letterbox	Polished Silver (Contract Chrome) - Black frame	40
FS1506	Letterbox	Polished Gold (Contract Brass) - Black frame	40
FS301	Letterbox	Chrome - Black frame	40
FS314	Letterbox	Stainless Steel - Silver frame	40
FS300	Letterbox	Brass - Black frame	40

12" Defender Intumescent Letterboxes

Code	Description	Finish	Pack Outers
FS307	Letterbox	SAA - Black frame	40
FS315	Letterbox	SAA - Silver frame	40
FS1501	Letterbox	Polished Silver (Contract Chrome) - Black frame	40
FS306	Letterbox	Polished Gold (Contract Brass) - Black frame	40
FS305	Letterbox	Chrome - Black frame	40
FS313	Letterbox	Stainless Steel - Silver frame	40
FS304	Letterbox	Brass - Black frame	40



Elite Range - 30/60 minute fire rated



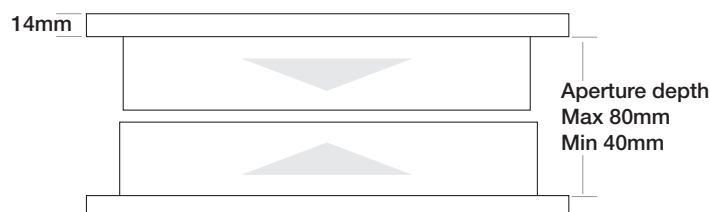
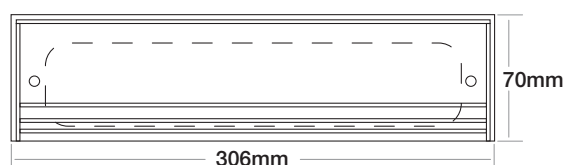
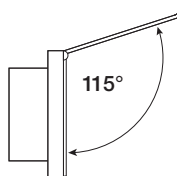
Description

A robust, commercial, metal framed, telescopic letterbox with metal flaps and fitted with a high performance intumescent liner.

In the event of fire the intumescent liner expands rapidly and seals off the letterbox opening, preventing the spread of fire and smoke whilst maintaining the integrity of the fire door assembly.

Features & Benefits

- Letterbox flaps open to 115°
- Smoke tested
- Security tested to PAS 23/24
- Adjustable telescopic sleeve set to suit 40mm - 80mm door thickness.
- Fitted with brush pile draught excluders
- Integral sound dampening bumpers
- Available in satin anodised aluminium, polished silver and polished gold finishes
- Robust aluminium construction
- Fully sealed backplate
- Compliant to BS 2911

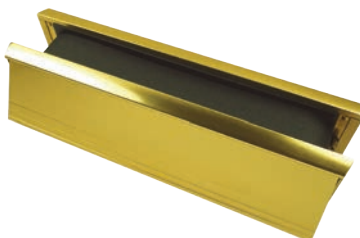




Elite Range - 30/60 minute fire rated



FS310



FS311



FS312

Installation

- Carefully cut an aperture in the Fire door leaf as per the dimensions below up to 1050mm from the bottom of the door. Please ensure that the aperture is a tight fit.
- The face plate fitted with the integral draught excluders should be located to the internal face of the door.
- Locate the letter box into the cut aperture and secure using the fixings provided.
- To maintain the fire proof integrity of the fire door ensure any gaps between the letter box and the door aperture are sealed using our intumescent sealant.

Testing

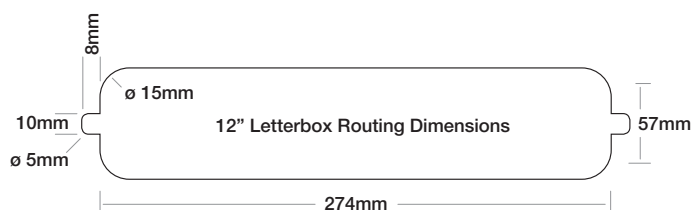
Fire Tested

Tested to BS 476 part 22: 1987,
30 and 60 minute rated

Smoke Tested

Tested to BS 476 Part 31/1: 1983

Routing Dimensions



12" Elite Intumescent Letterboxes

Code	Description	Finish	Pack Outers
FS310	Letterbox	Satin Anodised Aluminium	25
FS311	Letterbox	Polished Gold (Contract Brass)	25
FS312	Letterbox	Polished Silver (Contract Chrome)	25



01305 257 428



sales@firestopltd.co.uk



firestopltd.co.uk



PROTECTING LIFE & PROPERTY

Firestop Manufacturing Limited
4 - 6 Wyvern Buildings
Grove Trading Estate
Dorchester
Dorset DT1 1ST



01305 257 428



sales@firestopltd.co.uk



firestopltd.co.uk