



PROTECTING LIFE & PROPERTY



Intumescent Air Transfer Grilles



Intumescent Air Transfer Grilles

Description

A comprehensive range of 30 and 60 minute fire rated air transfer grilles designed for use in fire resisting doorsets and compartment walls.

When dormant the grilles enable air to be circulated throughout the building, in the event of a fire they are designed to close and restrict the flow of hot gases and fire.



150 x 150mm Grille



225 x 225mm Grille

Features & Benefits

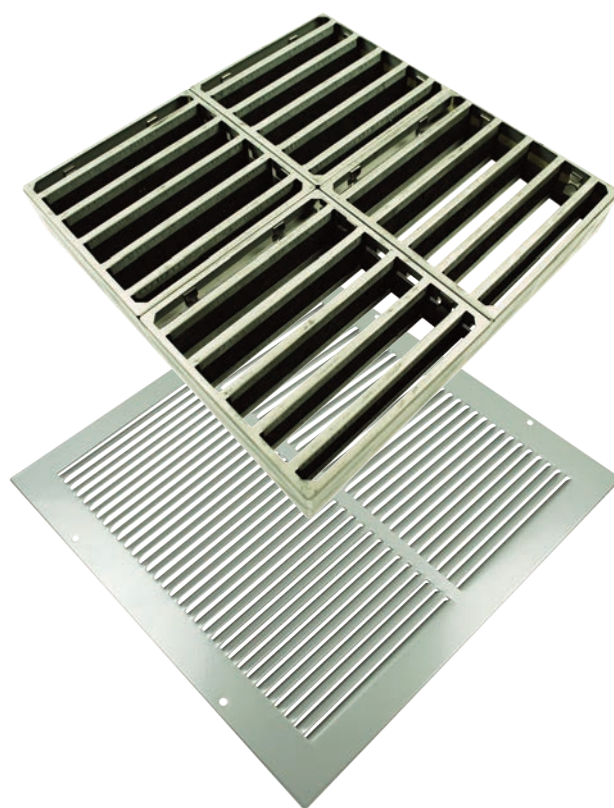
- Grilles are of a modular and robust construction
- The frames are constructed from Zintec Mild Steel 0.65mm with matching clips
- The system is easy to install and maintenance free
- The intumescent material is totally unaffected by water, it's robust, non-flaking and difficult to tear
- Faceplates are constructed from Zintec Mild Steel 1.0mm thick and powder coated
- Faceplates are supplied with fixing screws
- High volume of free air flow
- Grilles can be stacked to create one off sizes

Testing

All air transfer grille systems are tested to BS476 part 20/part 22:1987. - 30 and 60 minute rated

Colours

- Silver



300 x 300mm Grille

Key: symbols for product feature qualities



t 01305 257 428

e sales@firestopltd.co.uk

w firestopltd.co.uk

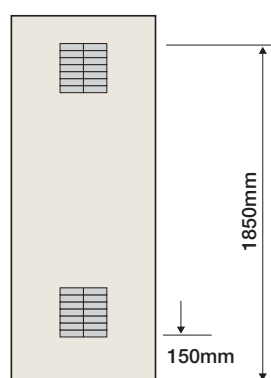


Firestop Air Transfer Grilles

Installation & Guidance

Firstly, the installer must ensure that the doorset/door blank has been tested with an aperture to accept an air transfer grilles system for the required period of fire resistance.

Failure to comply with the requirements and instructions detailed in the specification of the doorset/blank may invalidate the fire resistance of the fire resisting door assembly.



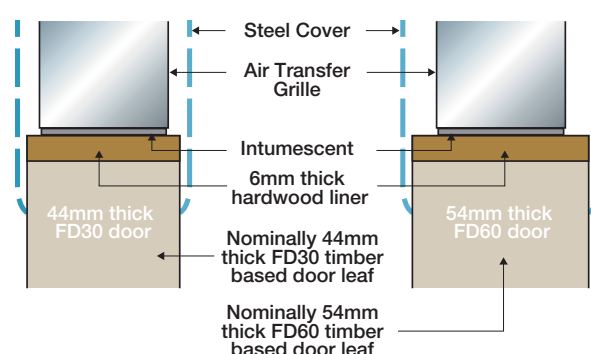
(Fig. A)

Position and location within the doorset (Fig. A)

As the test series included both positive and negative pressure tests it is considered that the proposed grilles may be installed within doorsets adhering to the following parameters. The system shall be installed no closer than 150mm to the threshold and no higher than 1850mm.

Installation Procedure

- 1 Cut the aperture in the door.
- 2 Line the aperture with a 6mm hardwood liner.
- 3 Apply a bead of Firestop intumescent acrylic sealant centrally and spread the sealant across the full width of timber liner, to achieve a thickness of 0.50mm.
- 4 Install the ATG into the aperture.
- 5 Secure the system into place using steel pins, not supplied. Alternatively, secure the system using self-tapping screws.
- 6 Fit cover plates on both faces of the door.



(Fig. B)

Firestop Air Transfer Grilles

Code	Description	Size (MM)	Free Air Flow	Finish
FS400	Air Transfer Grille	150mm x 150mm	153 sq cms	Zintec
FS401	Air Transfer Grille	150mm x 300mm	307 sq cms	Zintec
FS402	Air Transfer Grille	300mm x 300mm	614 sq cms	Zintec
FS403	Air Transfer Grille	112mm x 225mm	161 sq cms	Zintec
FS404	Air Transfer Grille	225mm x 225mm	323 sq cms	Zintec

Firestop Air Transfer Grille Face Plates

Code	Description	Size (MM)	Free Air Flow	Finish
FS420	Face Plate	150mm x 150mm	150 sq cms	Silver
FS421	Face Plate	150mm x 300mm	295 sq cms	Silver
FS422	Face Plate	300mm x 300mm	593 sq cms	Silver
FS423	Face Plate	112mm x 225mm	159 sq cms	Silver
FS424	Face Plate	225mm x 225mm	320 sq cms	Silver



PROTECTING LIFE & PROPERTY

Firestop Manufacturing Limited
4 - 6 Wyvern Buildings
Grove Trading Estate
Dorchester
Dorset DT1 1ST

t 01305 257 428

e sales@firestopltd.co.uk

w firestopltd.co.uk